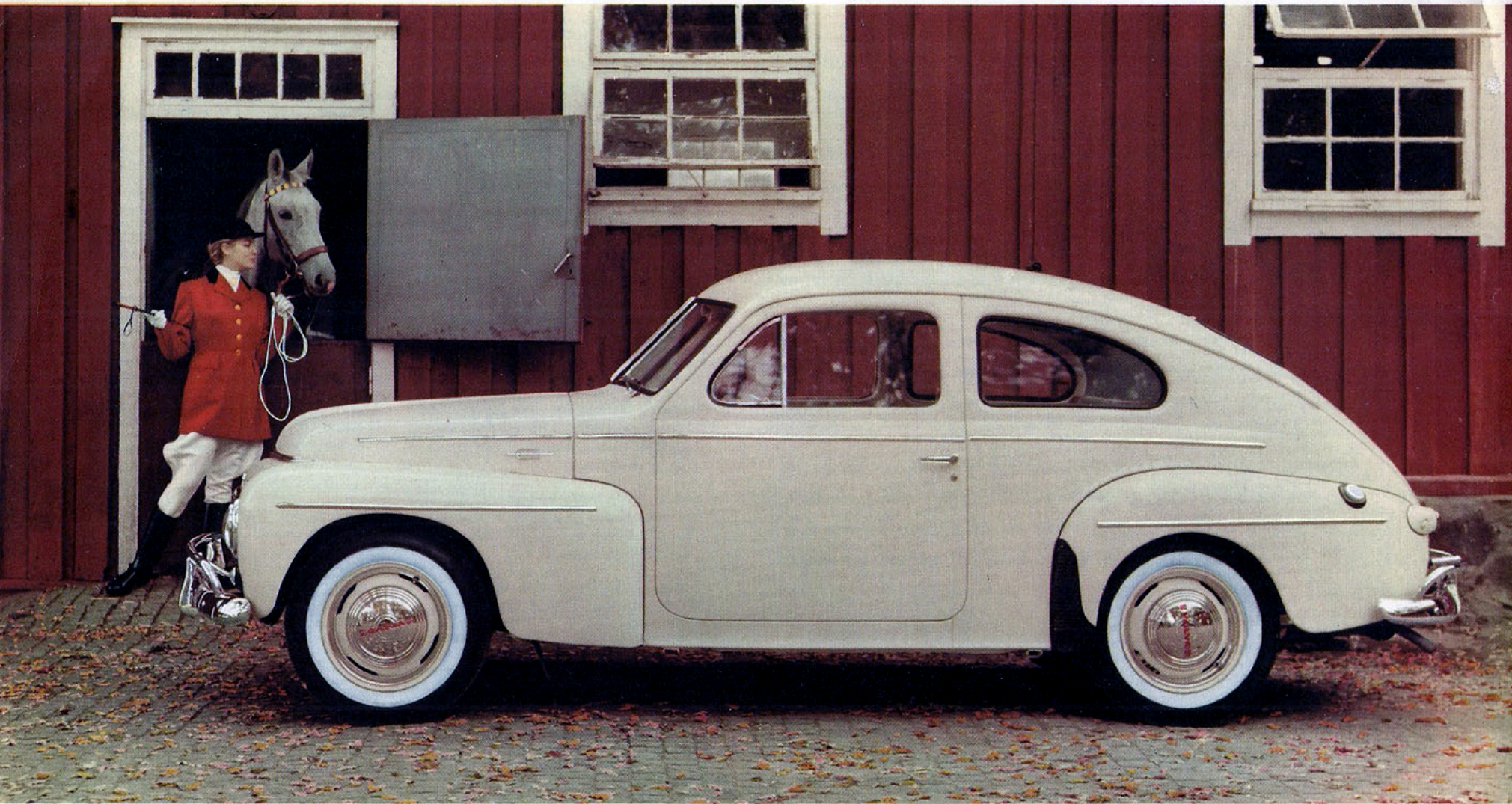


VOLVO PV 444



The Family Sports Car

The Swedish Volvo PV 444 combines the power and high-speed performance of a sports car with the safety and comfort of the ideal family car; it is a shining example of Swedish precision engineering at its best.

More than just a sports car, it has been designed for real safety while the smooth suspension in combination with armchair comfort ensures relaxed, carefree driving.

The PV 444 is exceptionally easy to handle. In dense town traffic its compact design and tight turning circle are great advantages especially as far as parking is concerned.

Out on the open road the economical twin-carburetor engine gives you sparkling high-speed performance. But no matter how fast you drive you always have a smooth controlled ride due to the ideal weight distribution and superb roadability.

Built to stand up to outdoor parking in all weather, the complete body has been rust-proofed by bonderizing while the surface finish consists of glossy but tough and durable synthetic enamel. There are main spare part depots at several points in the US and, from these, a network of stations for service and spares is being developed.

AB VOLVO

Export Department

Gothenburg — Sweden

SPECIFICATION

Engine: Type B16B four-cylinder, overhead-valve engine. Bore 3.125 in., stroke 3.15 in., displacement 97 cu.in., compression ratio 8.2:1. Output 85 b.h.p. at 5,500 r.p.m., torque 87 lb.ft. at 3,500 r.p.m. Twin SU horizontal carburetors. Fullflow oil filter.

Clutch: Spring-loaded single dry disk clutch.

Transmission: Three forward speeds and reverse.

Propeller shaft: Divided propeller shaft for vibration-free operation. The center bearing is mounted in vibration-free, sound-insulating rubber blocks.

Front suspension: Independent front wheel suspension with coil springs and control arms. Double-action hydraulic shock absorbers.

Rear suspension: Coil springs. Rear axle with rubbermounted support arms, torque arms and track rod. Double-action hydraulic shock absorbers.

Rear axle: Sturdy axle shafts in taper roller bearings. Hypoid final drive.

Steering: Hourglass worm and sector.

Brakes: Self-centering, hydraulic brakes with automatic adjustment. Lining area 144 sq.in. Handbrake operates independently on rear wheels.

Tires: Tubeless, low pressure, whitewall tires 5.90-15".

Gasoline tank: Capacity 9¹/₂ U.S. gallons.

Electrical equipment: Thief-proof armored cable between the ignition switch and the ignition coil. Fan-cooled generator (40 amp.). Sealed-beam headlamps. Battery, 6-volt, 85 amp.hr. capacity.

Instruments and controls: Oil pressure gauge, ammeter, fuel gauge, speedometer with mileometer.

Self-cancelling directional indicators (flasher type). Pullout type handbrake lever. Central gearshift lever.

Standard equipment: Double electric windshield wipers. Two sun visors. Ashtrays. Comprehensive tool kit and jack. Spare wheel.

Dimensions and weight: Wheelbase 102¹/₂", over-all length 177" front tread 51", rear tread 51³/₄", over-all width 62¹/₂", height 60¹/₄". Weight, including fuel, oil and water 2,140 lb.

The Volvo Company reserves the right to change specifications, designs and prices.

a product of superb swedish engineering